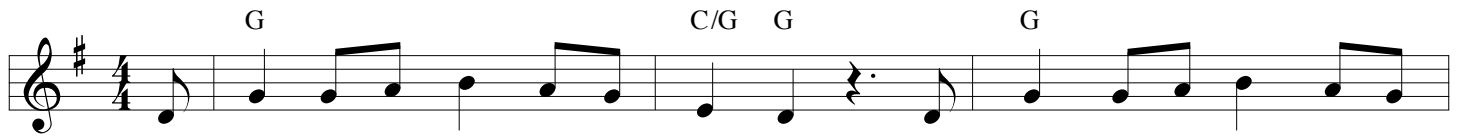
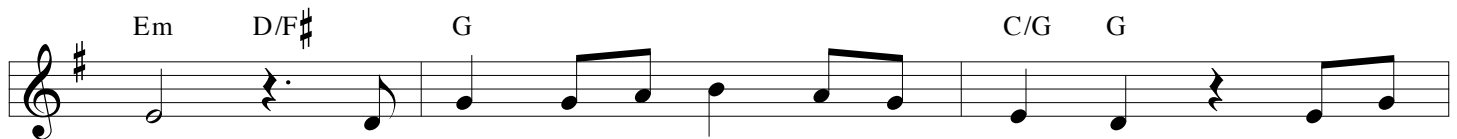


Eternal Family

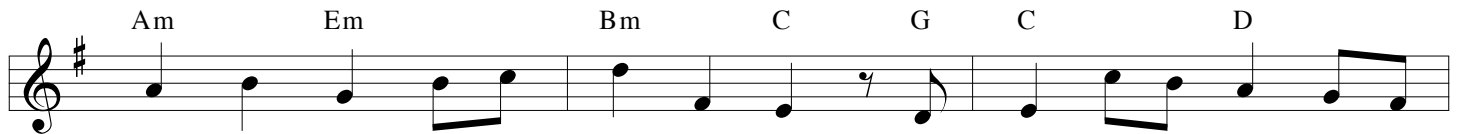
text and music by
Greg Scheer, BMI



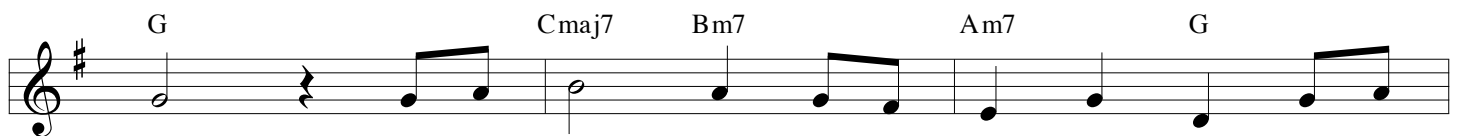
1. We sing to the Fa - ther, Cre - a - tor, who sculpt - ed the earth with his
2. We sing to Christ Je - sus, Re - deem - er, en - fleshed that all flesh live a -
3. We sing to the great Ho - ly Spir - it, who com - forts, em - pow - ers, in -
4. We sing to the Trin - i - ty ho - ly, e - ter - nal - ly lov - ing as



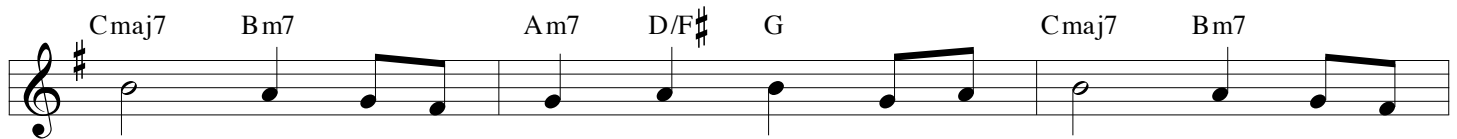
hands. We sing to the lov - ing Sus - tain - er, whose un -
gain. We sing for the wa - ter that's stream - ing, for the
spires. We sing of a God who is near us. God who
one. We sing of the love o - ver - flow - ing: love that



ceas - ing care shines in all that's fair - from gal - ax - y to grain of
wine that's spilled and the bread that fills, all shared at the ban - quet of
guides our feet, fills our hearts with peace, and cleans - es with wa - ter and
left its home, claims us for its own, a - dopts us as daugh - ters and



sand. Hal - le - lu - jah to the Fa - ther God. Hal - le -
friends. fire.
sons.



lu - jah, Je - sus Christ the Son. Ho - ly Spir - it, ev - er



three in one - e - ter - nal - fam' - ly of love.